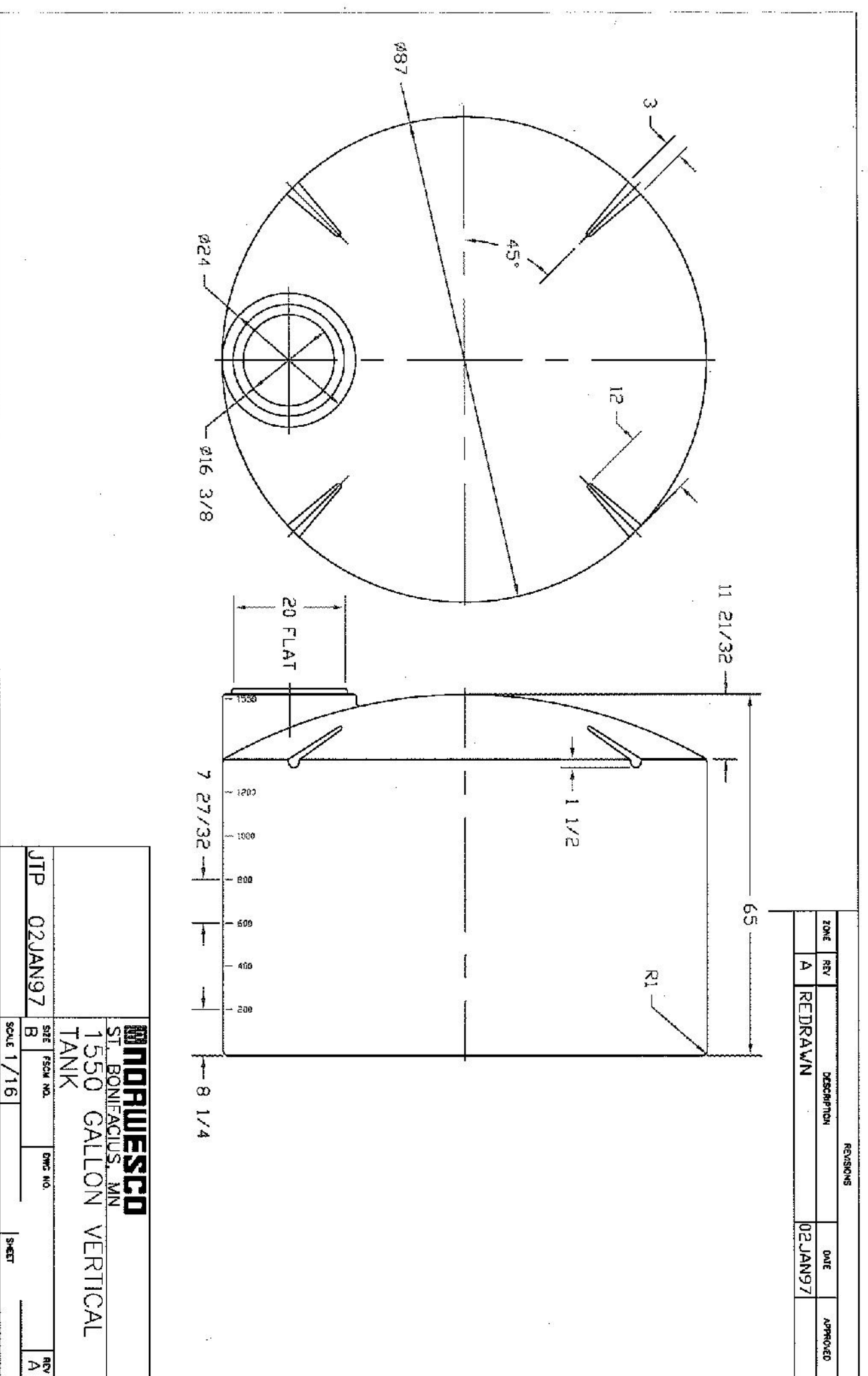
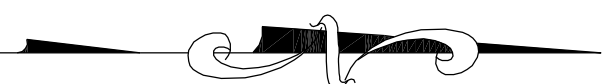




SITE PLAN
1" = 20'



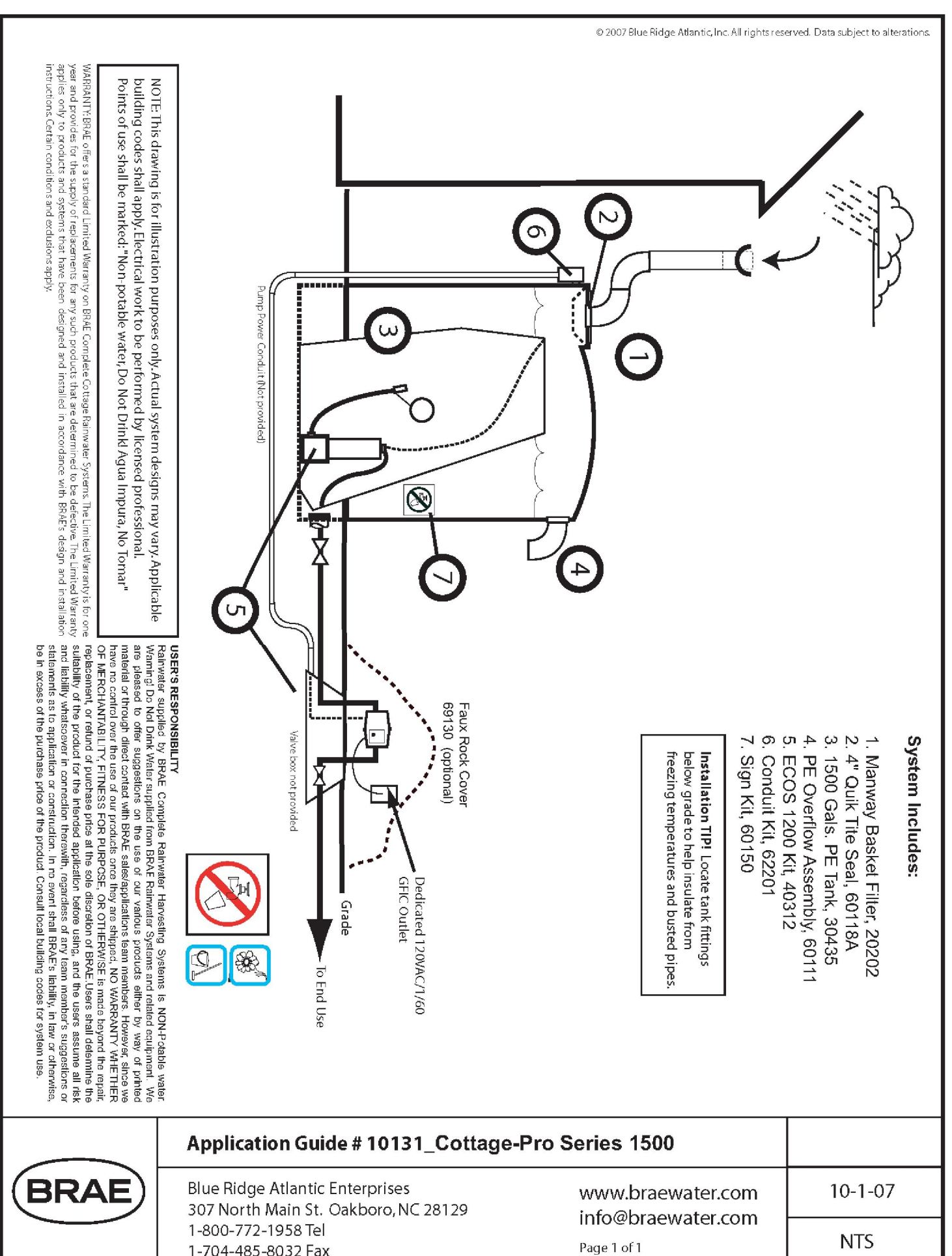
CISTERN WATERSHED INFORMATION:

DRAINAGE AREA = 0.03 AC.
 IMPERVIOUS AREA = 0.03 AC.
 1.5" RAINFALL RUNOFF VOLUME = 158 CF (1189 GPM)
 PROPOSED STORAGE VOLUME = 1,500 GALLON
 ANNUAL WATER DEMAND REPLACED = 25%

CISTERN NOTES:

1. CISTERN FOUNDATION, PIPING, PUMPS, AND OTHER CONNECTIONS TO BE DESIGNED BY OTHERS AND APPROVED BY ENGINEER ON LOCAL OFFICIAL PRIOR TO CONSTRUCTION.
2. CISTERN SYSTEM SHALL BE BRAE COTTAGE SERIES 3000 GALLON BLACK ABOVE GROUND STORAGE TANK OR APPROVED EQUAL. LOCAL OFFICIAL SHALL APPROVE ANY SUBSTITUTION OF MATERIALS.
3. SUPPLEMENT WATER SUPPLY TO MAINTAIN AT LEAST 200 GALLONS (MINIMUM) IN CISTERN AT ALL TIMES.
4. NON-POIBLE WATER USE ONLY.
5. CISTERN TO BE LABELED "DO NOT DRINK" ON ALL SIDES AND AT ALL HOSE BIBBS.

TYPICAL CISTERN PLAN
NTS



TYPICAL CISTERN SCHEMATIC
NTS

- GENERAL NOTES:**
1. CONDITIONS SHOWN ON DRAWING HAVE NOT BEEN FIELD SURVEYED. CONTRACTOR TO FIELD VERIFY ALL EXISTING CONDITIONS AND INFORM THE OWNER OF ALL DISCREPANCIES PRIOR TO COMMENCING CONSTRUCTION.
 2. CONTRACTOR SHALL VERIFY LOCATION OF ALL UTILITIES IN PROJECT AREA PRIOR TO BEGINNING ANY CONSTRUCTION ACTIVITY. ALL EXISTING UTILITIES SHALL BE PROTECTED FROM DISTURBANCE DURING CONSTRUCTION.
 3. CONTRACTOR SHALL BE RESPONSIBLE FOR SCHEDULING PRE-CONSTRUCTION SITE MEETING WITH OWNER AND ENGINEER AT LEAST 14 DAYS PRIOR TO CONSTRUCTION.
 4. ALL DEVICES SHALL INCLUDE ADEQUATE OVERFLOW PROTECTION MEASURES TO PROTECT BUILDINGS AND LANDSCAPING PLANS TO BE PREPARED BY LOCAL OFFICIAL.

PRELIMINARY
NOT APPROVED FOR CONSTRUCTION



No.	Revision	Date	By

Designer	Scale	Date
W&R	1" = 20'	6-24-10

CCAP - CARTERET COUNTY
CARTERET COUNTY
NORTH CAROLINA

WITHERS & RAVENEL
ENGINEERS | PLANNERS | SURVEYORS
111 MackKinnon Drive, Cary, North Carolina 27511 | tel: 919-469-3149 | fax: 919-467-0008 | www.wITHERSANDRAVENEL.COM